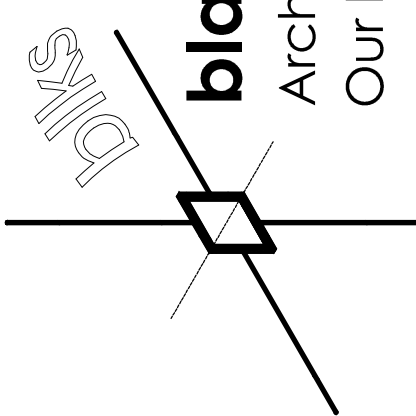
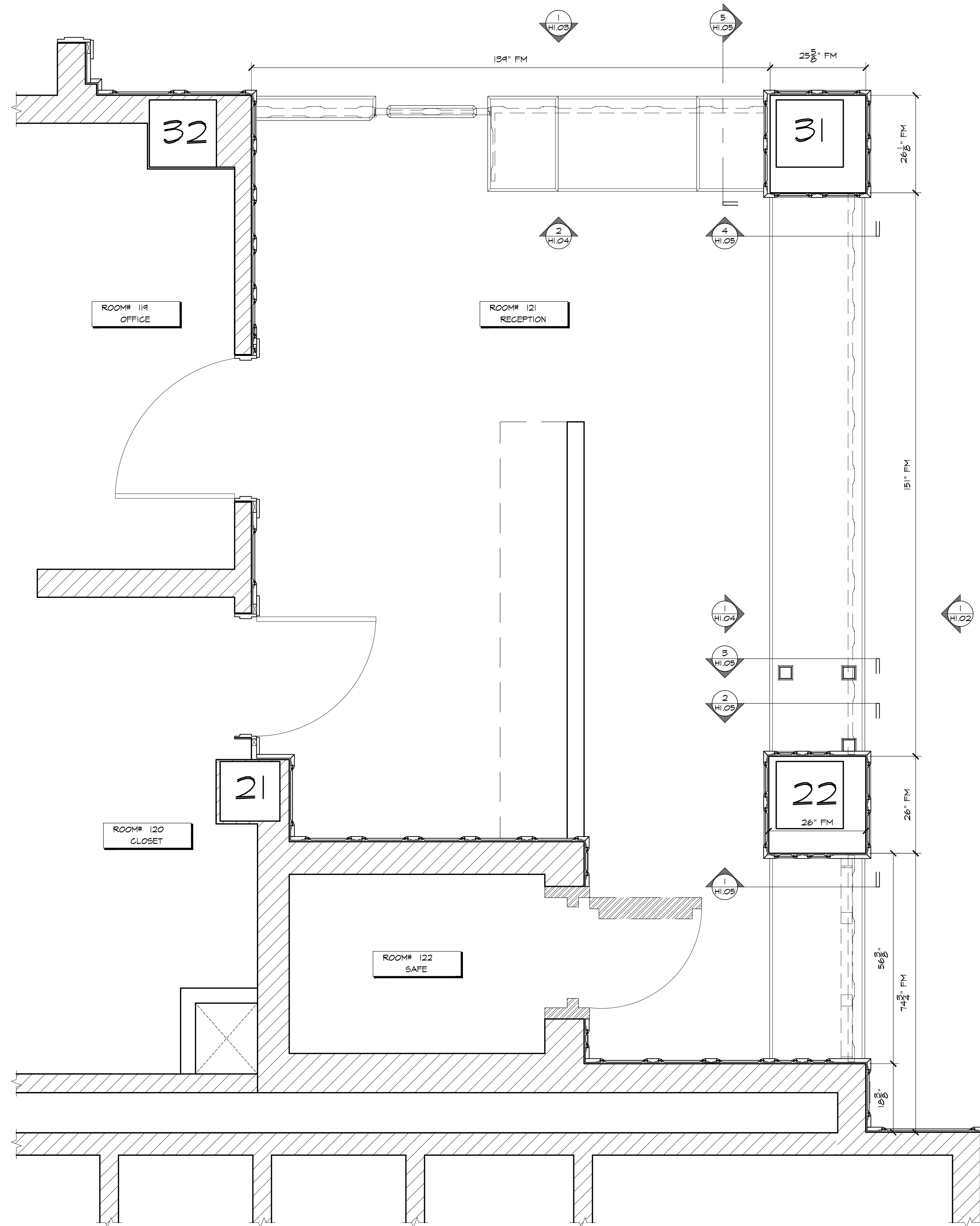


1 ENLARGED PLAN: MAIN LOBBY #113
H1.00 SCALE: 1/4"=12" ARCH. REF.: SHT 3 DSC DWGS / 1/A1.1

HISTORICAL

 **blacks outsourcing, inc.**
Architectural Woodwork Engineering
Our business is drawing yours

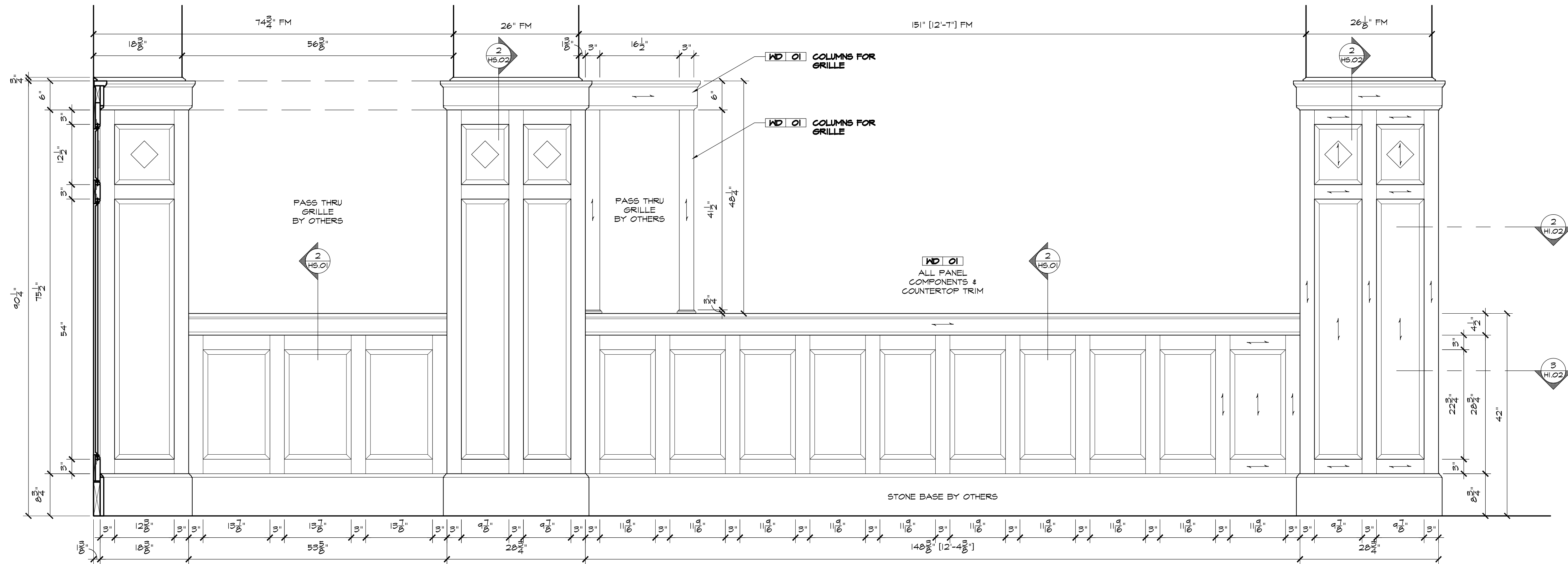
H1.00



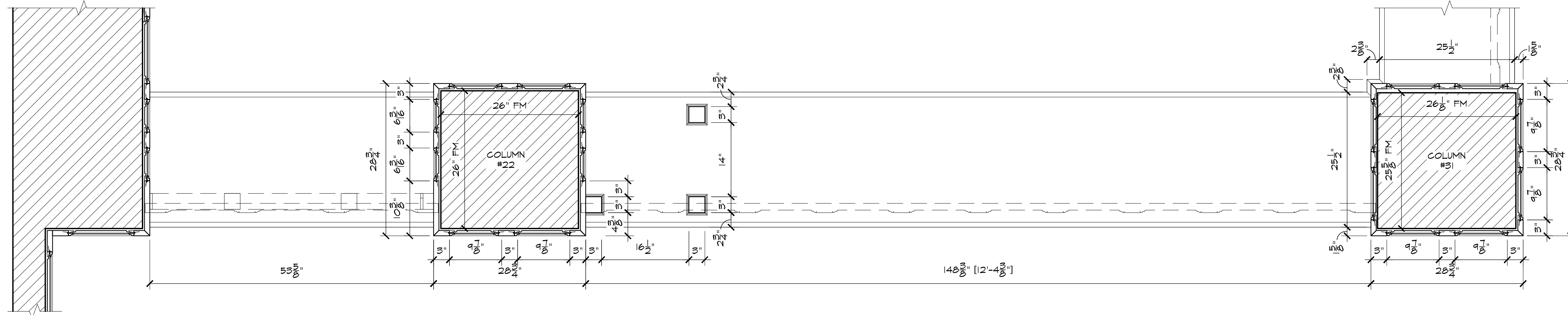
1
H1.01

ENLARGED PLAN: RECEPTION #121
SCALE: 3/4"=12" ARCH. REF.: SHT 3 DSG DWGS / 15/A2.0

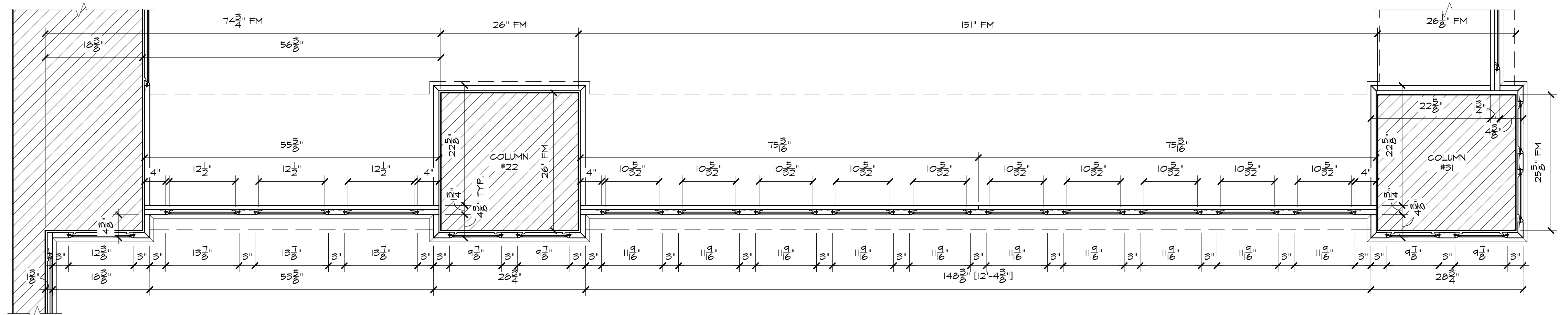
HISTORICAL



1 ELEVATION:
H1.02 SCALE: 1"=12" ARCH. REF.: SHT 18 DSC DWGS / 4/2.1

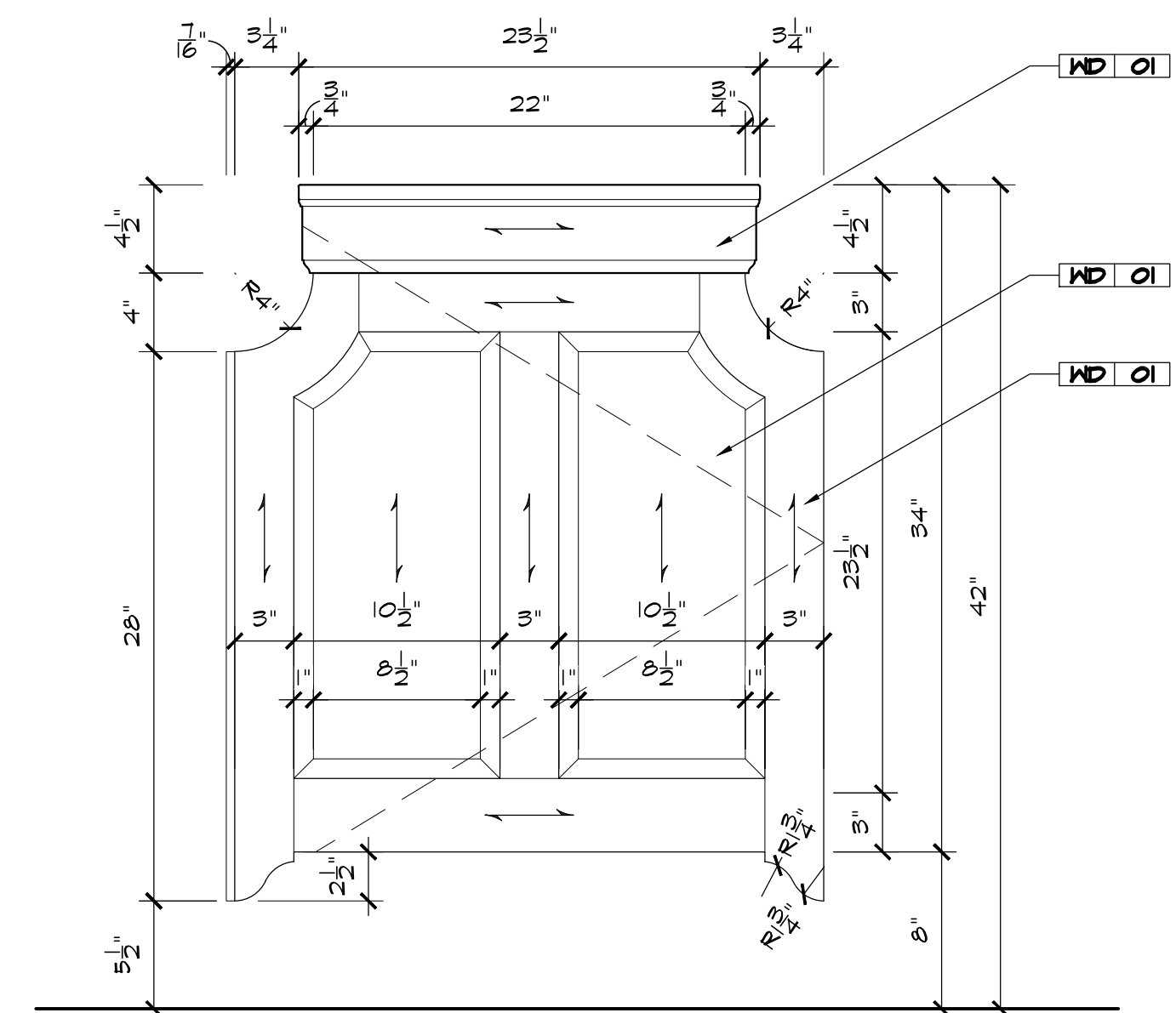
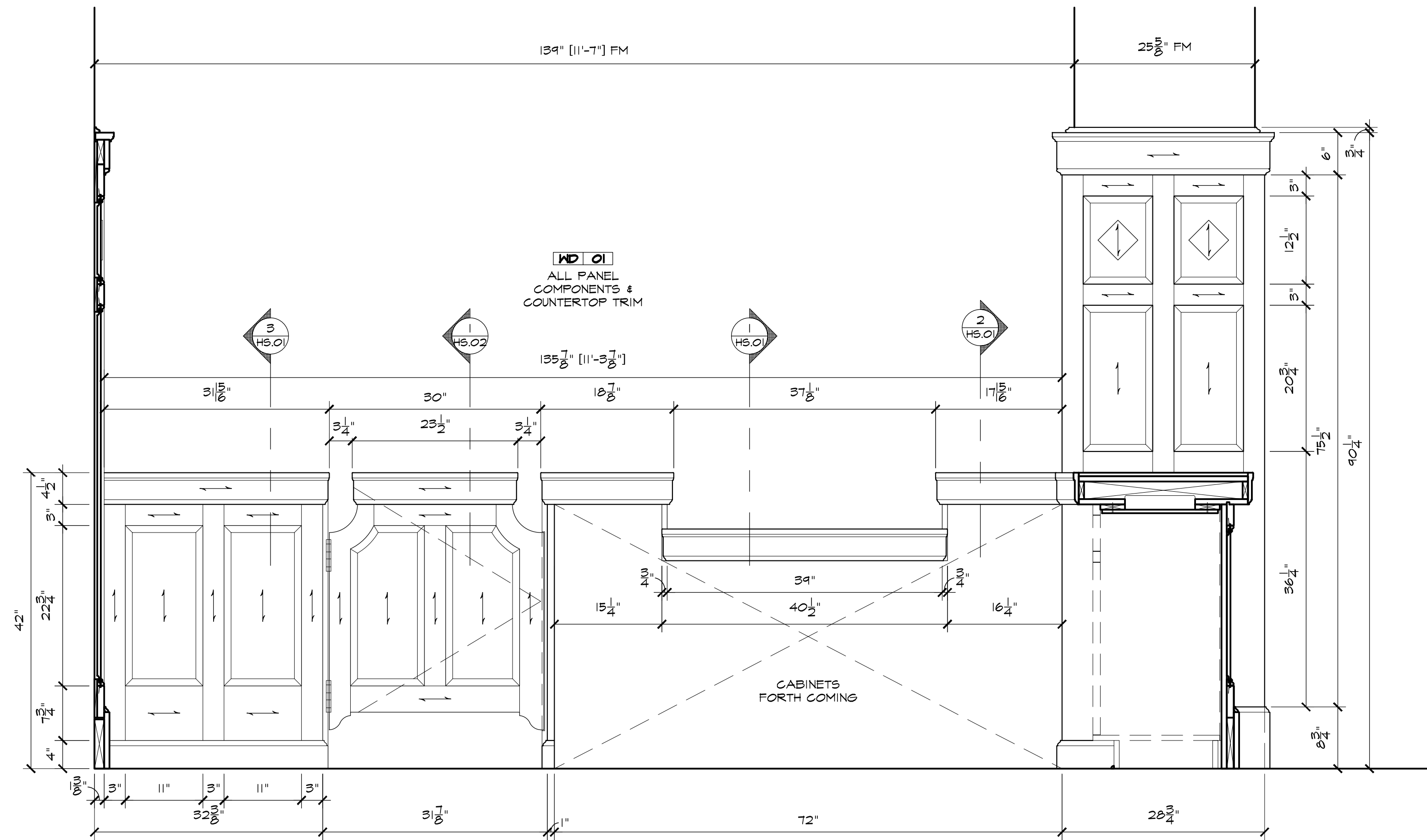
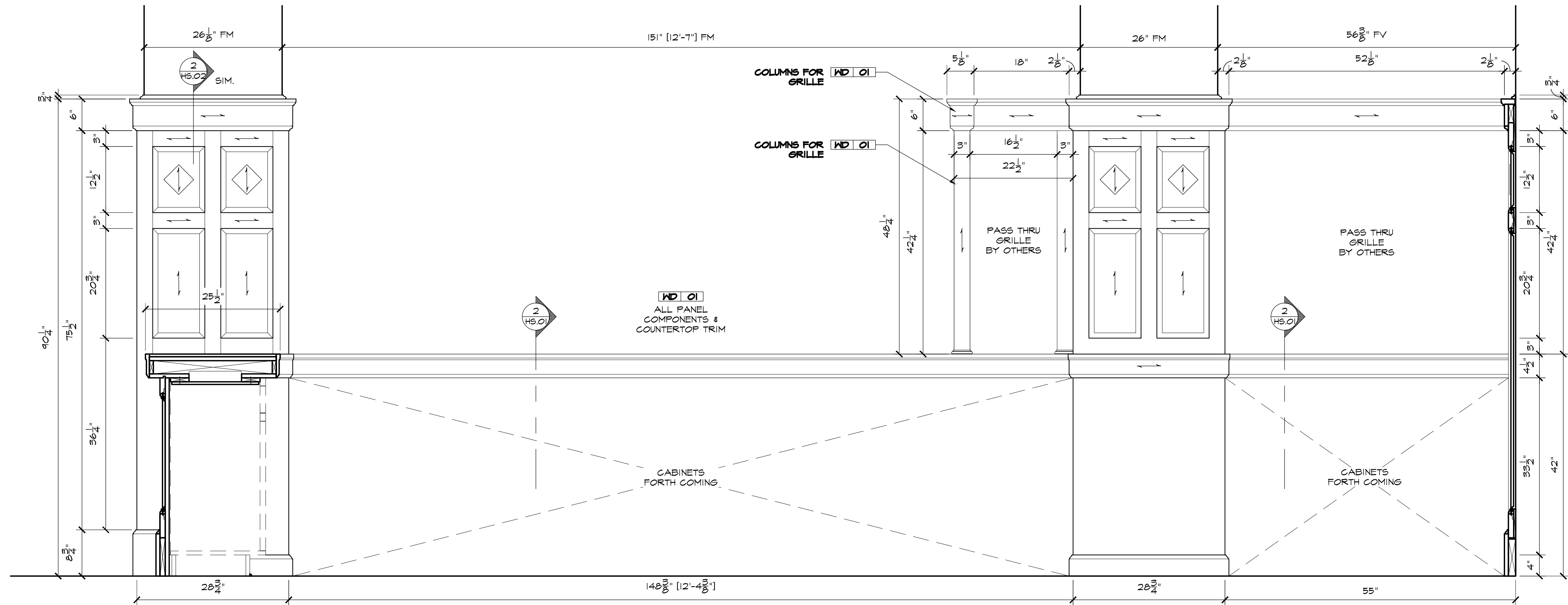


2 PLAN SECTION:
H1.02 SCALE: 1"=12" ARCH. REF.: NONE

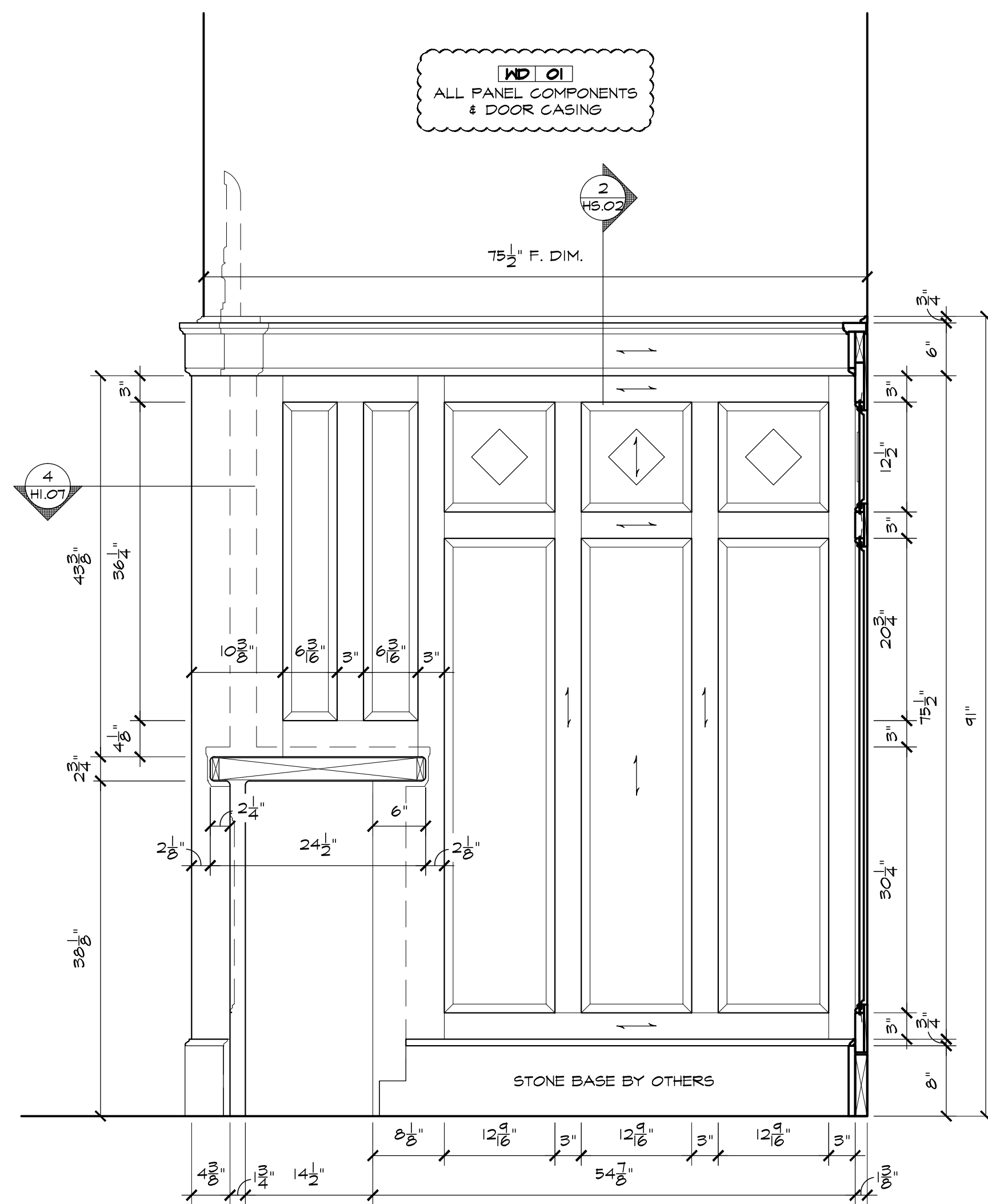


3 PLAN SECTION:
H1.02 SCALE: 1"=12" ARCH. REF.: NONE

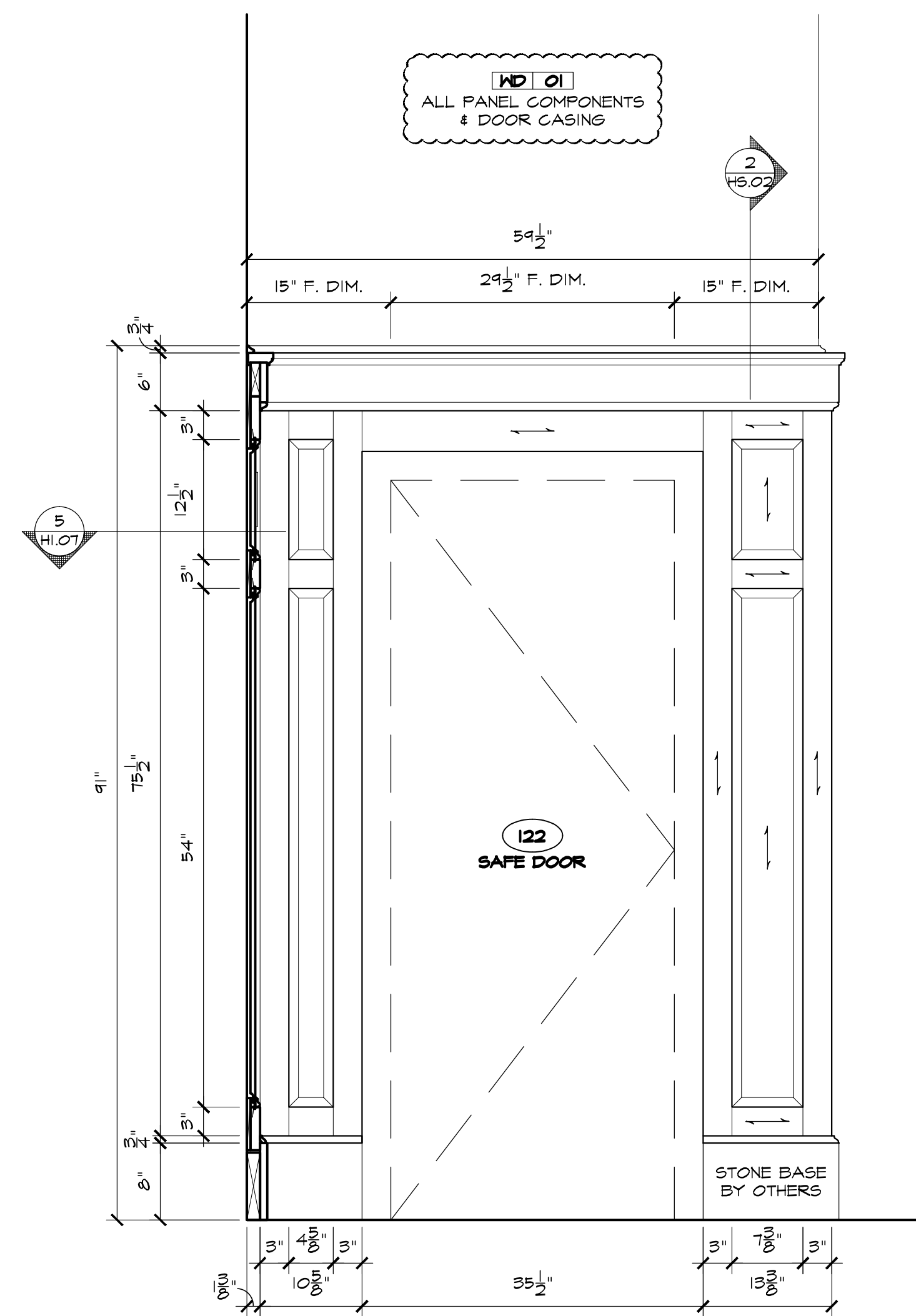
HISTORICAL



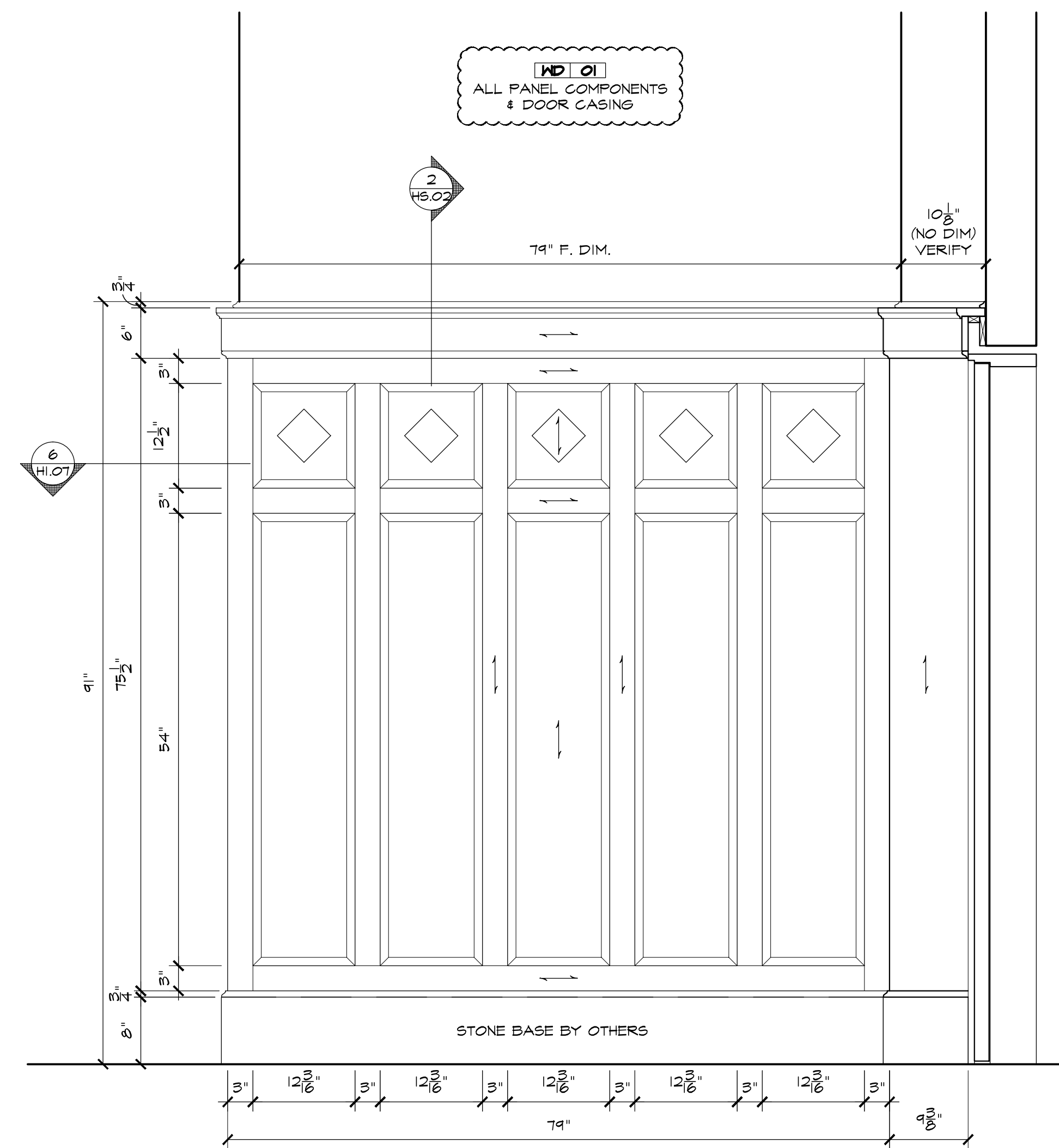
HISTORICAL



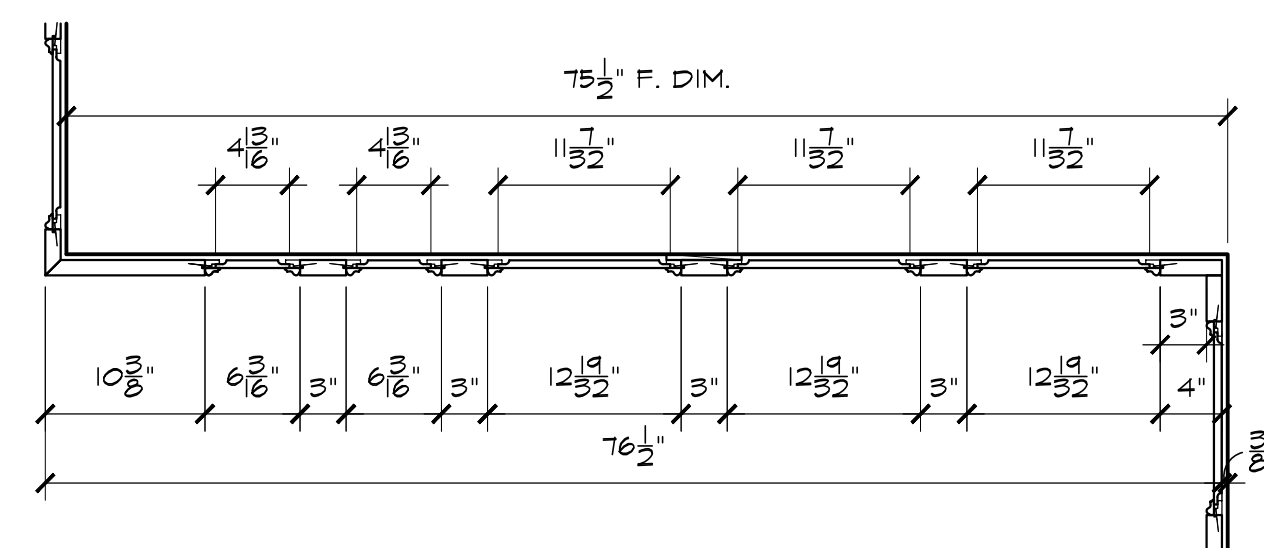
1 ELEVATION:
H1.07 SCALE: 1"=12" ARCH. REF.: 13/A2.1



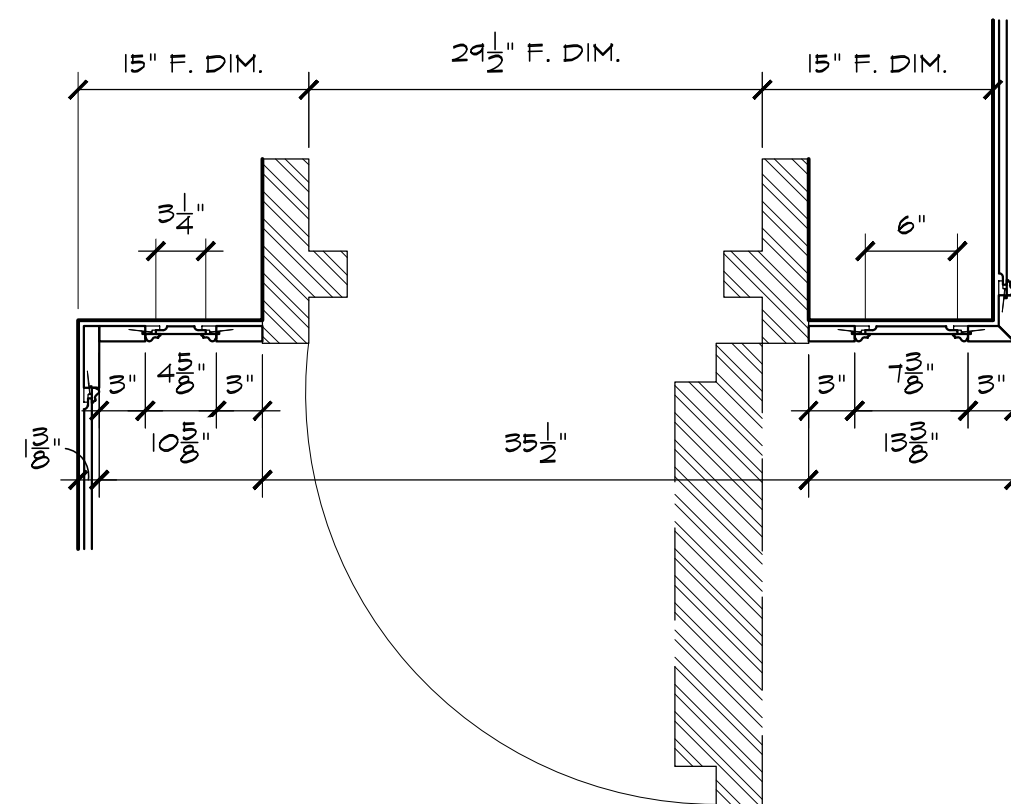
2 ELEVATION:
H1.07 SCALE: 1"=12" ARCH. REF.: 14/A2.1



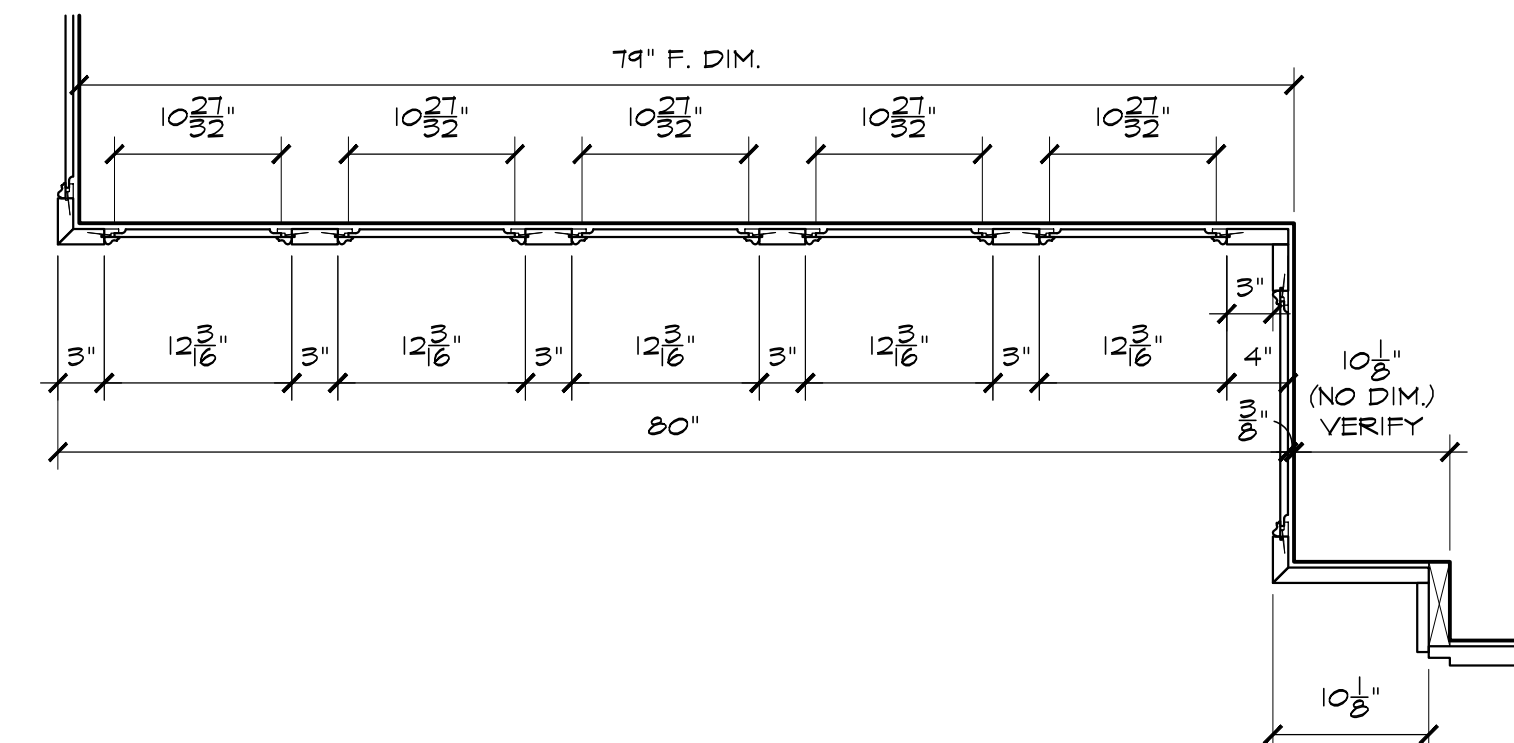
3 ELEVATION:
H1.07 SCALE: 1"=12" ARCH. REF.: SHT 18 DSC DWGS / 13/A2.1



4 PLAN SECTION:
H1.07 SCALE: 1"=12" ARCH. REF.: NONE

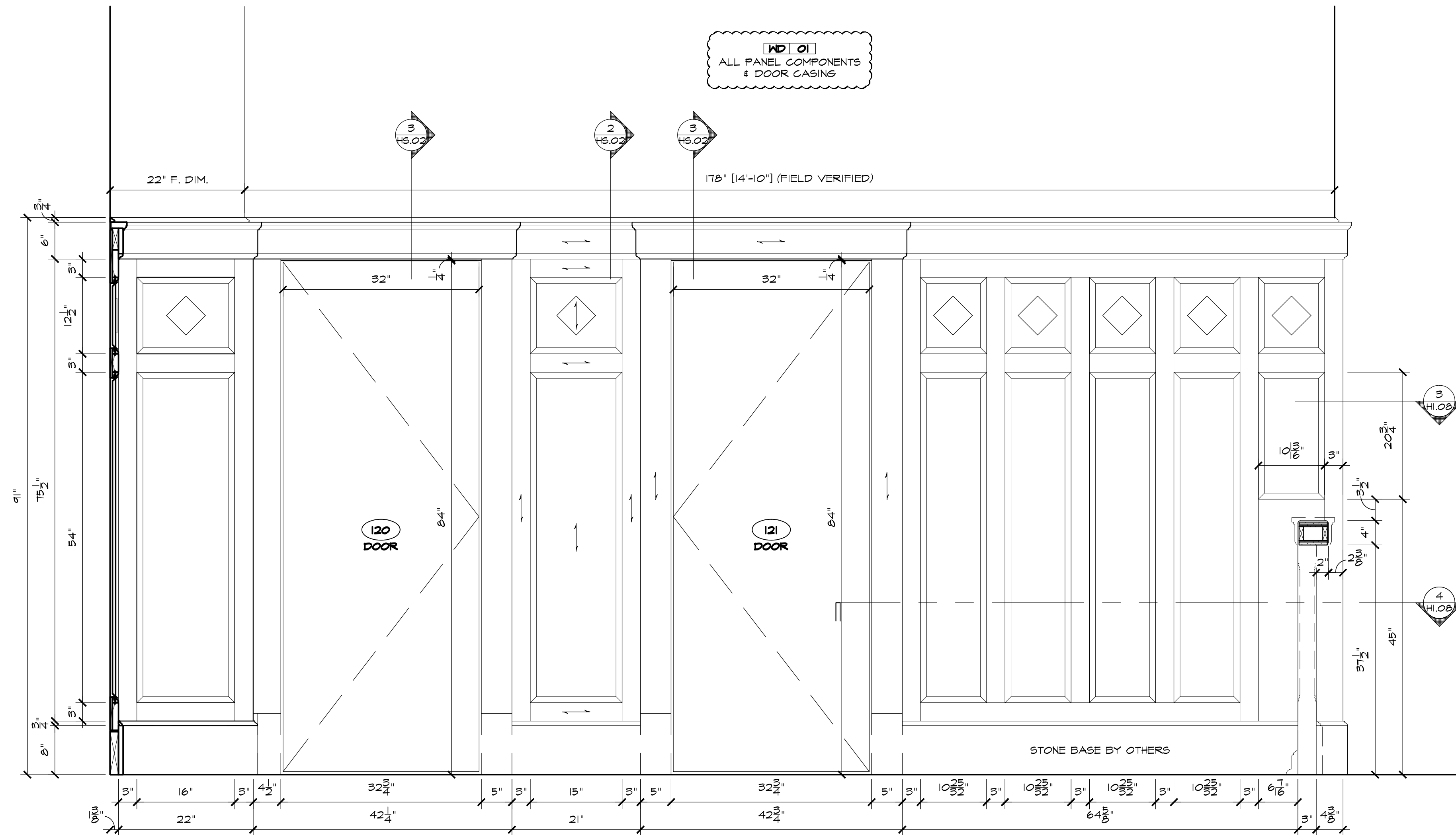


5 PLAN SECTION:
H1.07 SCALE: 1"=12" ARCH. REF.: NONE

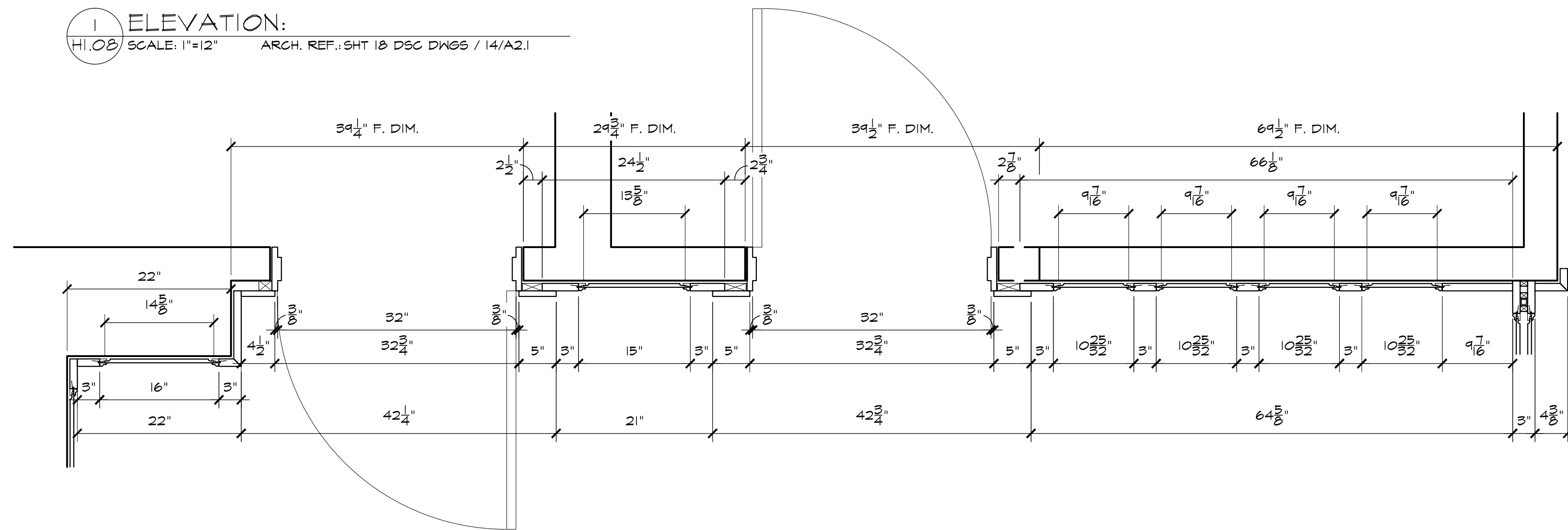


6 PLAN SECTION:
H1.07 SCALE: 1"=12" ARCH. REF.: NONE

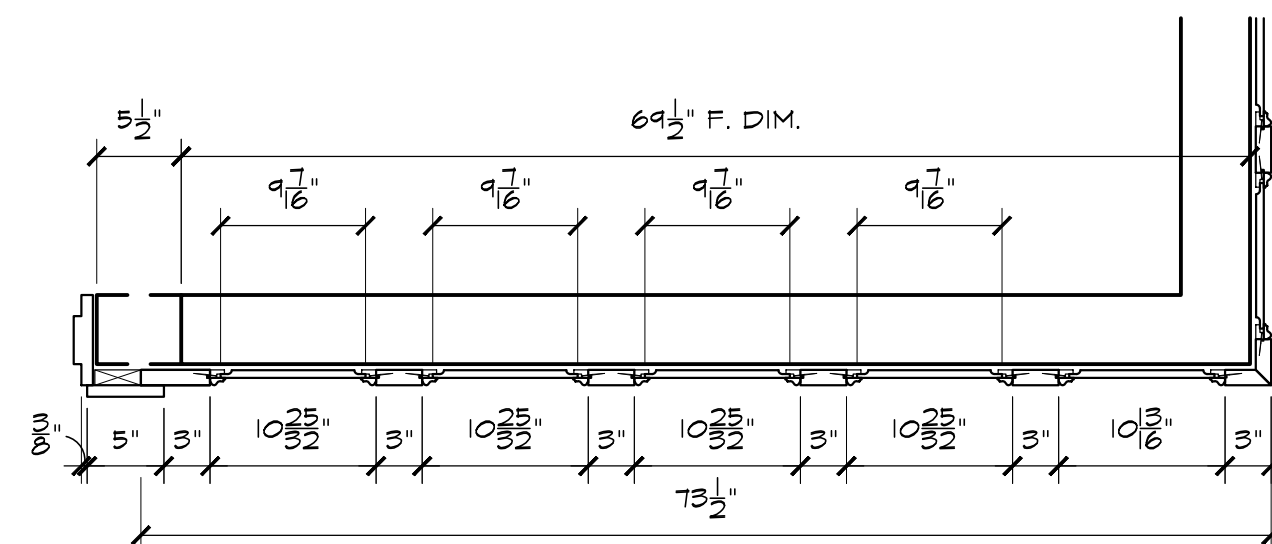
HISTORICAL



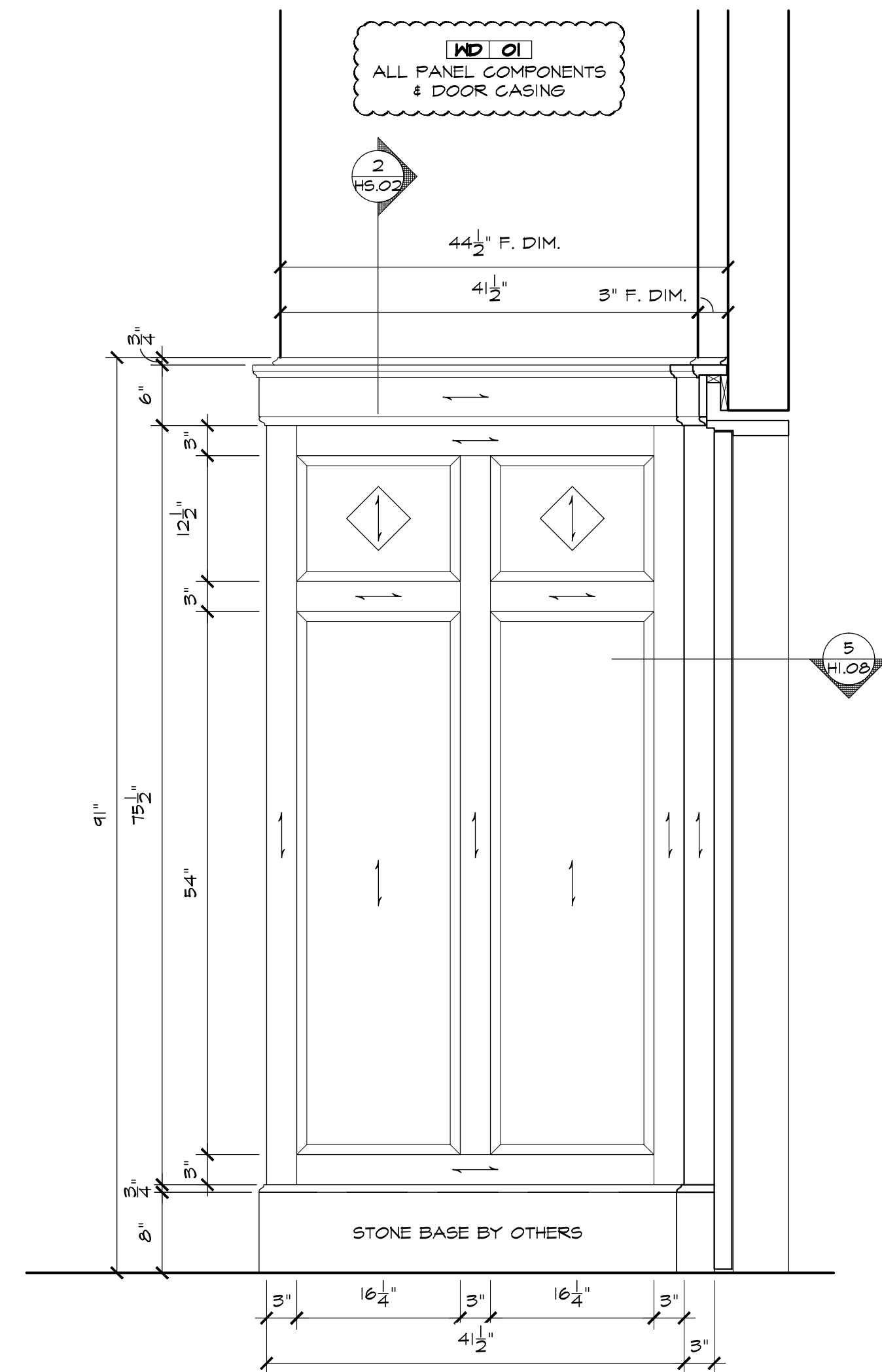
1 ELEVATION:
H1.08 SCALE: 1"=12" ARCH. REF.: SHT 18 DSC DWGS / 14/A2.1



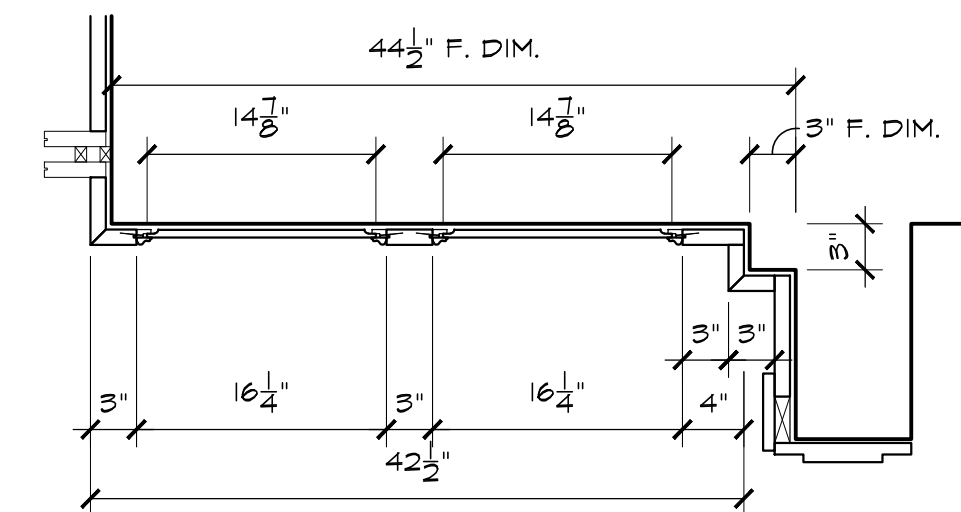
3 PLAN SECTION:
H1.08 SCALE: 1"=12" ARCH. REF.: NONE



4 PLAN SECTION:
H1.08 SCALE: 1"=12" ARCH. REF.: NONE

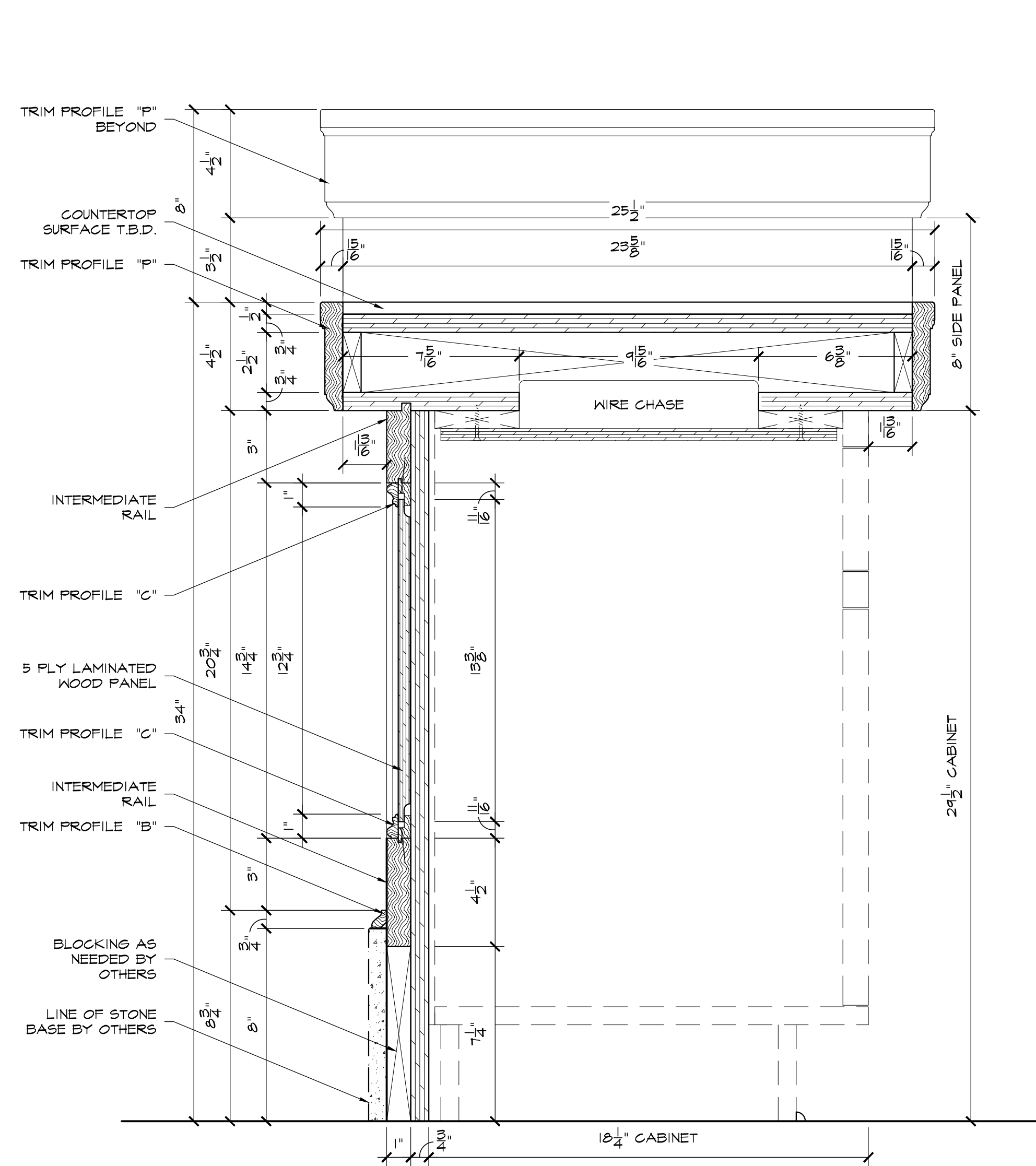


2 ELEVATION:
H1.08 SCALE: 1"=12" ARCH. REF.: SHT 18 DSC DWGS / 16/A2.1

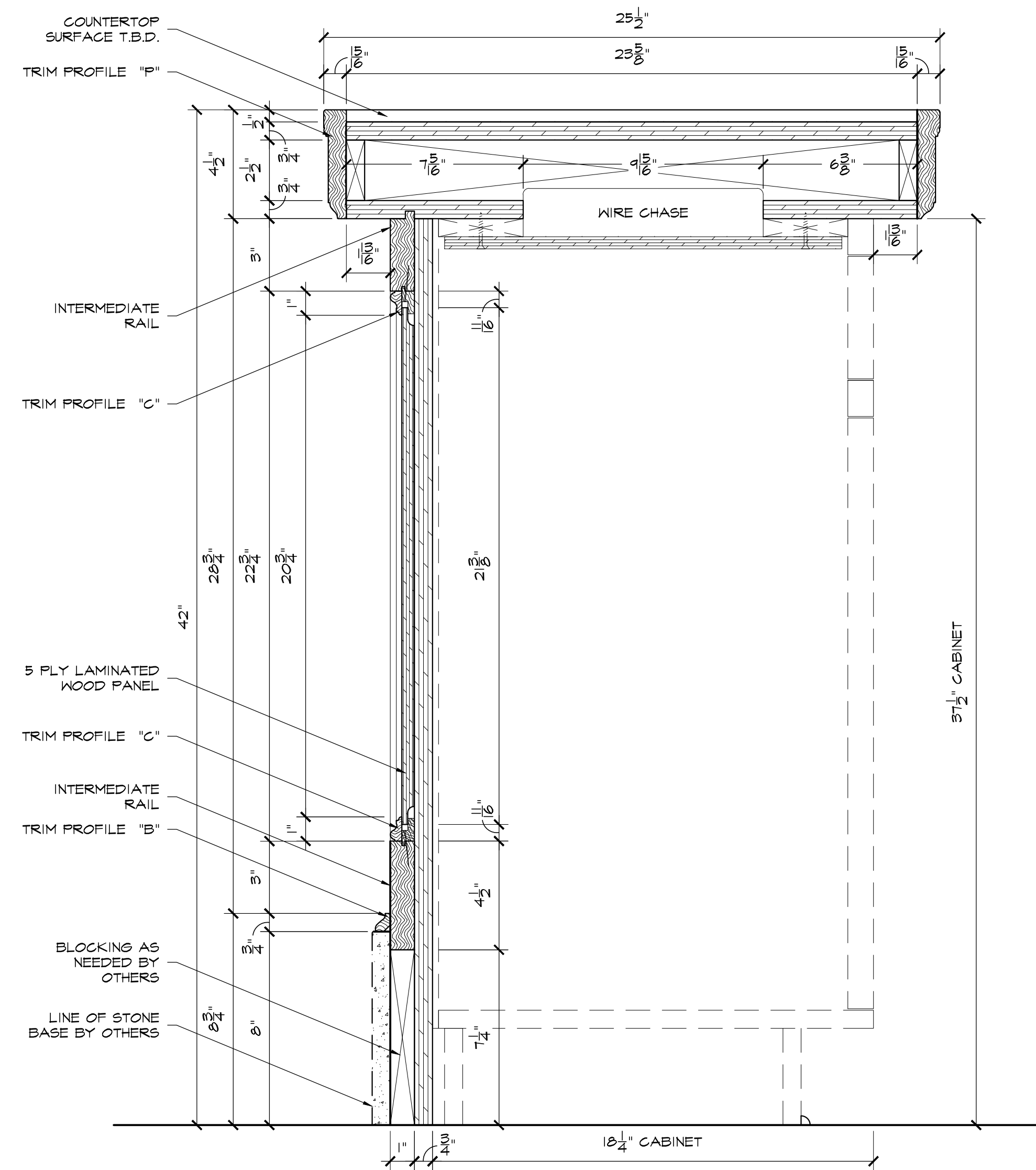


5 PLAN SECTION:
H1.08 SCALE: 1"=12" ARCH. REF.: NONE

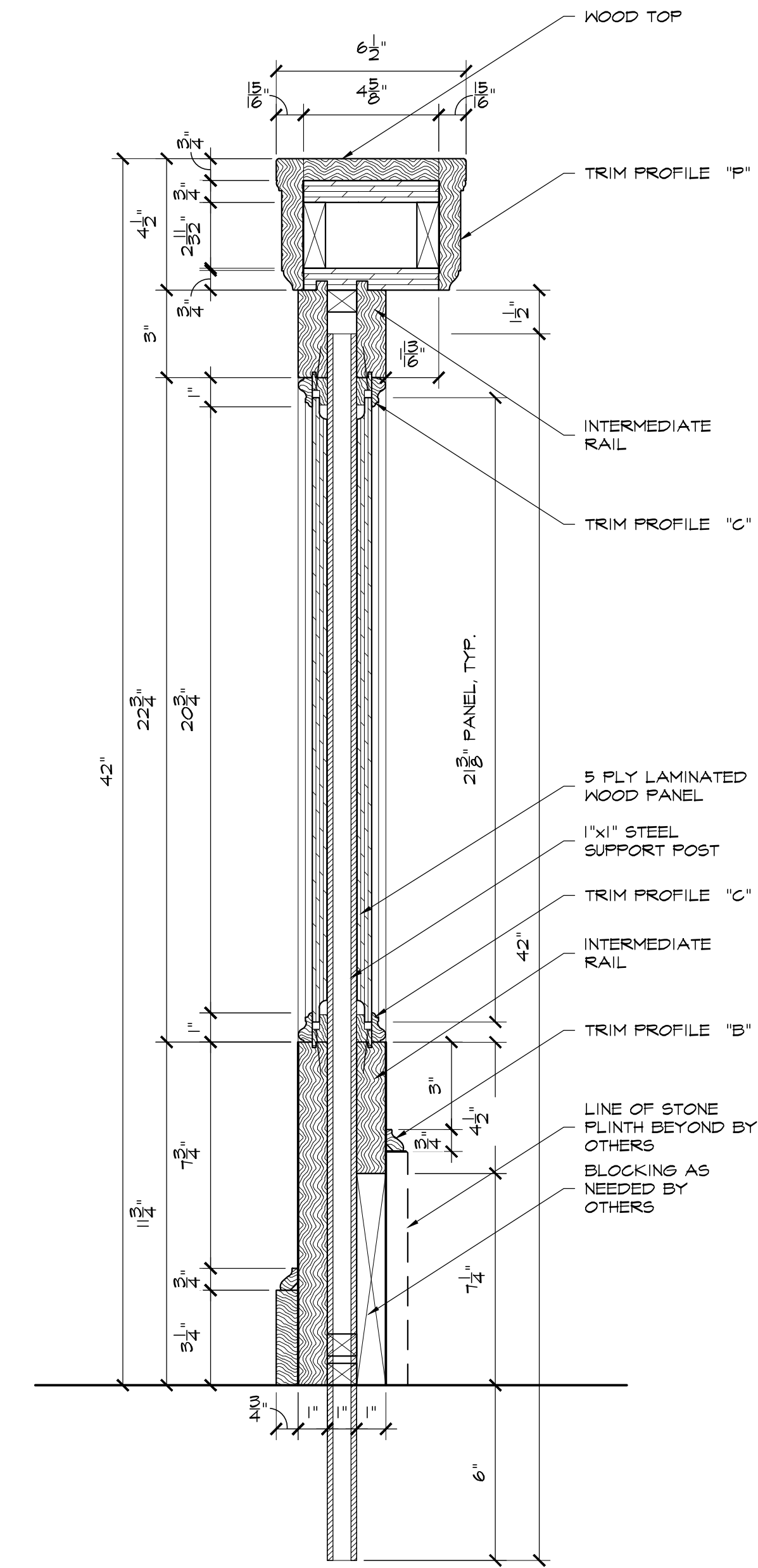
HISTORICAL



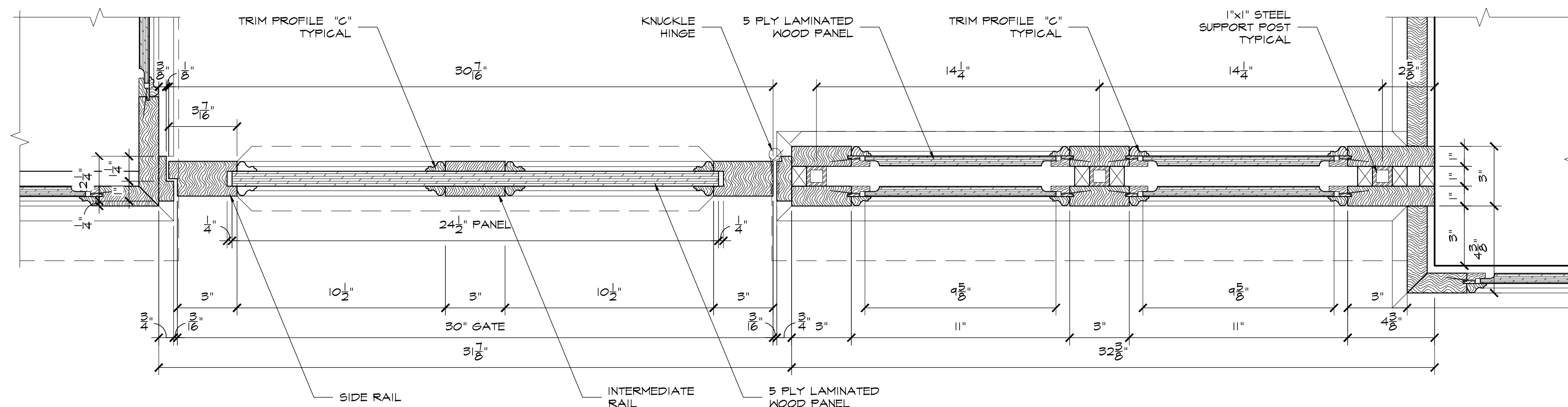
1 SECTION: ADA COUNTER
HS.O1 SCALE: 3"=12" ARCH. REF.SHT 20 DSG DWGS / 13/A2.2 SIM.



2 SECTION: TYP. COUNTER
HS.O1 SCALE: 3"=12" ARCH. REF.SHT 20 DSG DWGS / 13/A2.2



3 SECTION: WING WALL
HS.O1 SCALE: 3"=12" ARCH. REF.SHT 20 DSG DWGS / 17/A2.2



4 PLAN SECTION: GATE & WING WALL
HS.O1 SCALE: 3"=12" ARCH. REF.: NONE

HISTORICAL

blacks outsourcing, inc.
Architectural Woodwork Engineering
Our business is drawing yours

HS.01



HS.02